

# Installation Ez3D-Plus

Für das System

Ez3D-Plus



## Inhaltsverzeichnis

<b>1</b>	<b>Benötigtes Material</b>	2
1.1	Lizenz Dongel	2
1.2	Ez3D-Plus Installationssetup	2
1.3	HASP Installationssetup	2
1.4	LM Installationssetup	2
1.5	Implantat Datenbanksetup	2
<b>2</b>	<b>Installation Ez3D-Plus Console</b>	2
<b>3</b>	<b>Installation Ez3D-Plus Workstation</b>	3
<b>4</b>	<b>HASP Installation</b>	4
<b>5</b>	<b>LM Lizenz Manager Installation</b>	5
<b>6</b>	<b>Installation Implantat Datenbank</b>	5
6.1	Hersteller bezogene Installation	5
6.2	Installation mehrerer Implantat Systeme	6
<b>7</b>	<b>Deinstallation von Implantat Systemen</b>	6

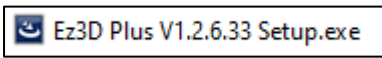
# 1 Benötigtes Material

## 1.1 Lizenz Dongel

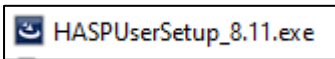
5+1 Dongel Lizenz. 5 Floating Lizenzen für Ez3D-Pro Workstation + 1 Feste Lizenz Ez3D-Pro Console.



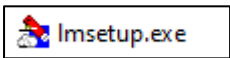
## 1.2 Ez3D-Plus Installationssetup



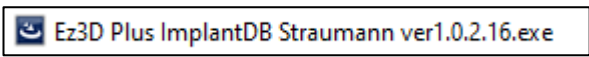
## 1.3 HASP Installationssetup



## 1.4 LM Installationssetup

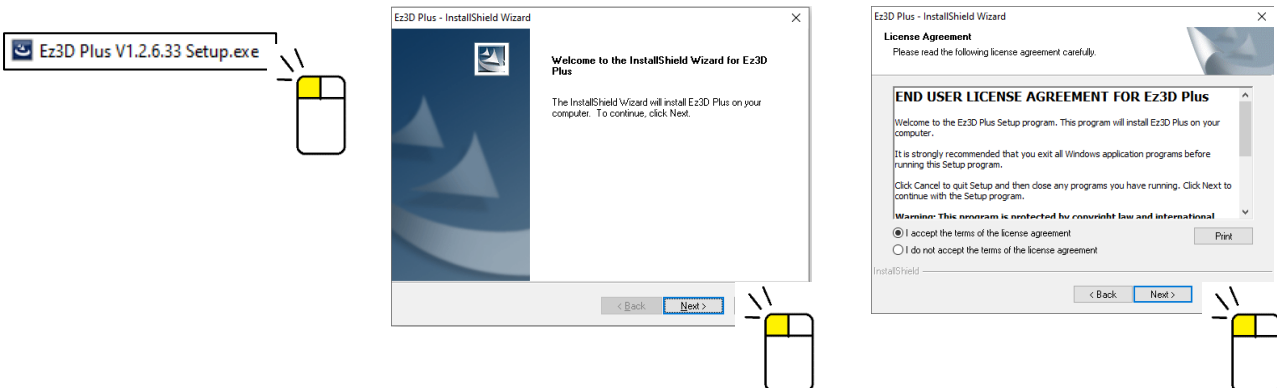


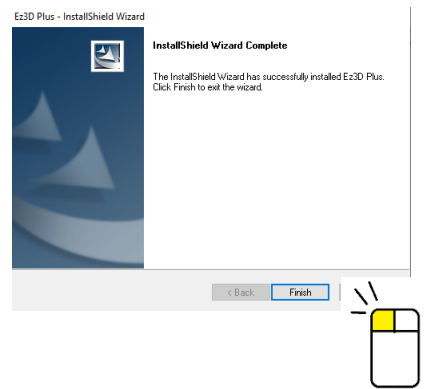
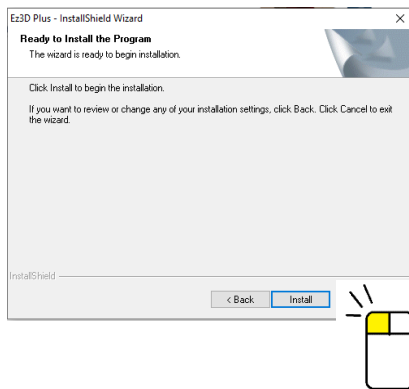
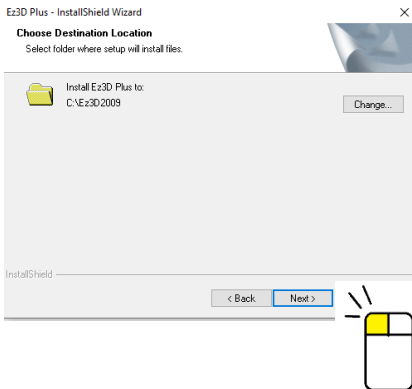
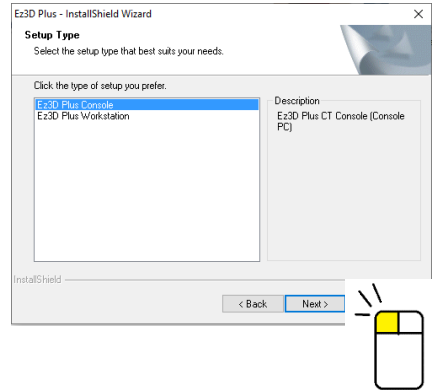
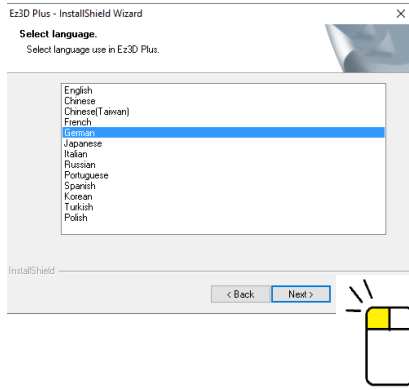
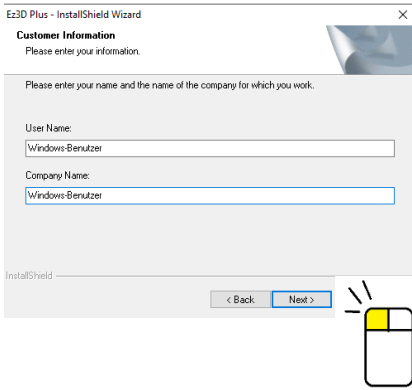
## 1.5 Implantat Datenbanksetup



# 2 Installation Ez3D-Plus Console

Ez3D-Plus Console: Installation Ez3D-Plus als Console zur Verwaltung der Softwarelizenzen im Praxisnetzwerk.

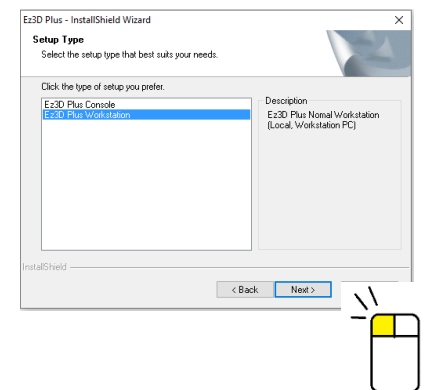
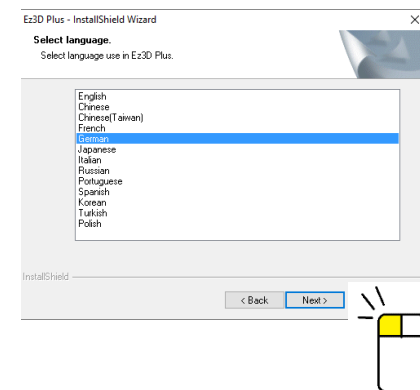
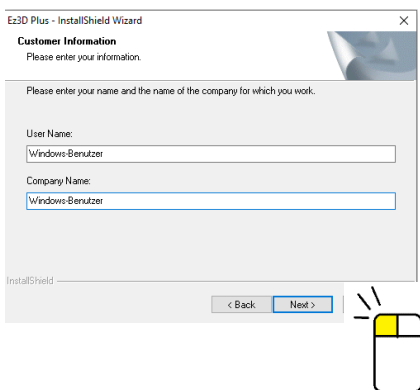
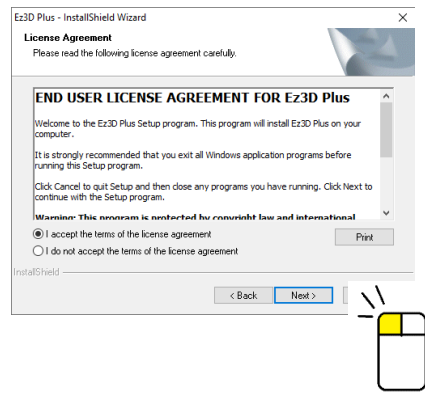
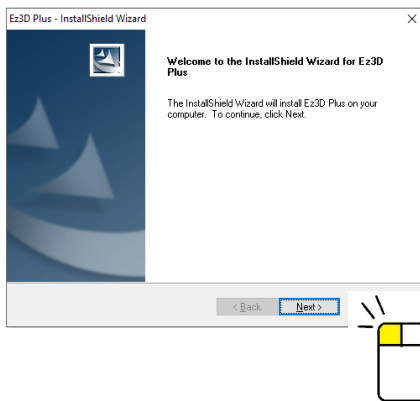


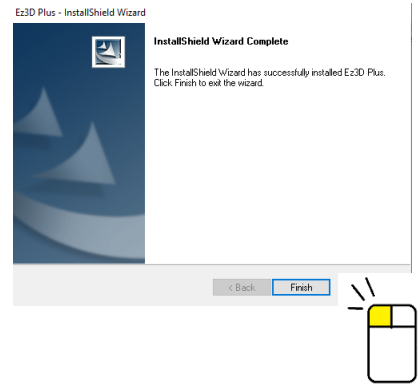
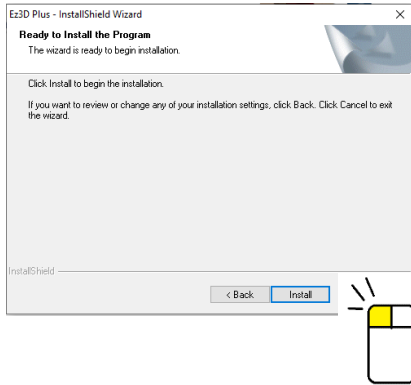
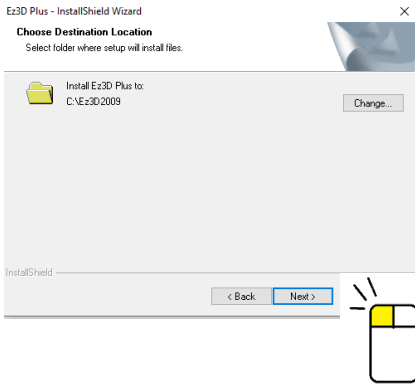


### 3 Installation Ez3D-Plus Workstation

Ez3D-Plus Workstation: Installation Ez3D-Plus als Workstation zur Betrachtung.

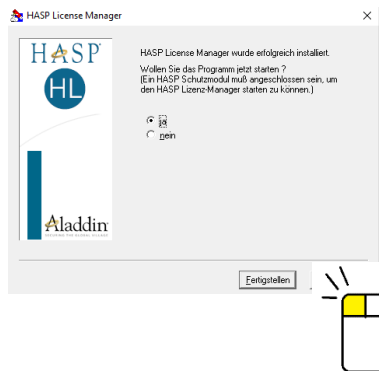
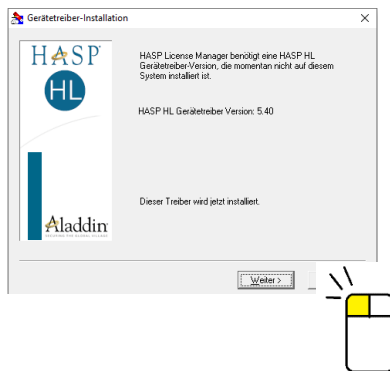
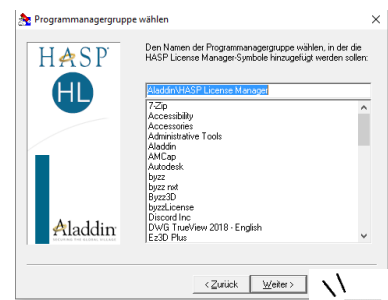
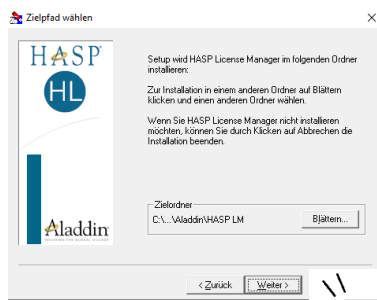
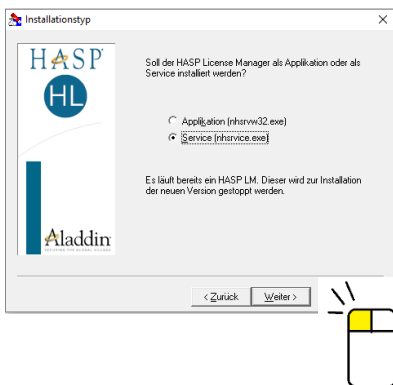
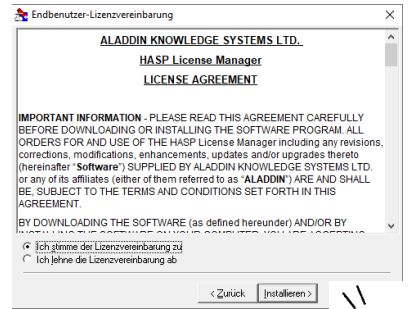
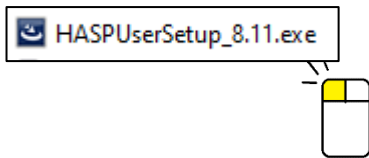
Ez3D Plus V1.2.6.33 Setup.exe





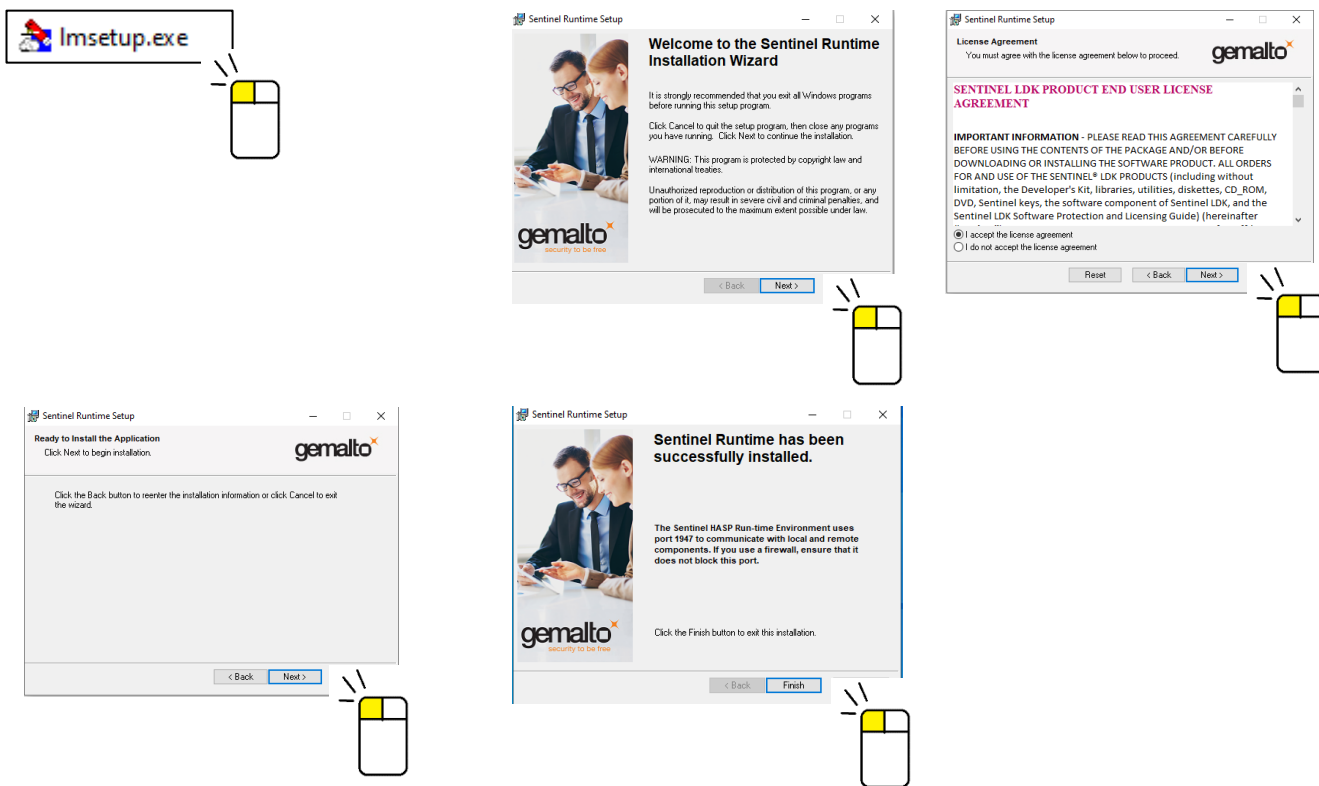
## 4 HASP Installation

HASP Installation: Installation HASP für Gerätetreiber des USB Lizenz-Dongel und Konfiguration der Firewall.



## 5 LM Lizenz Manager Installation

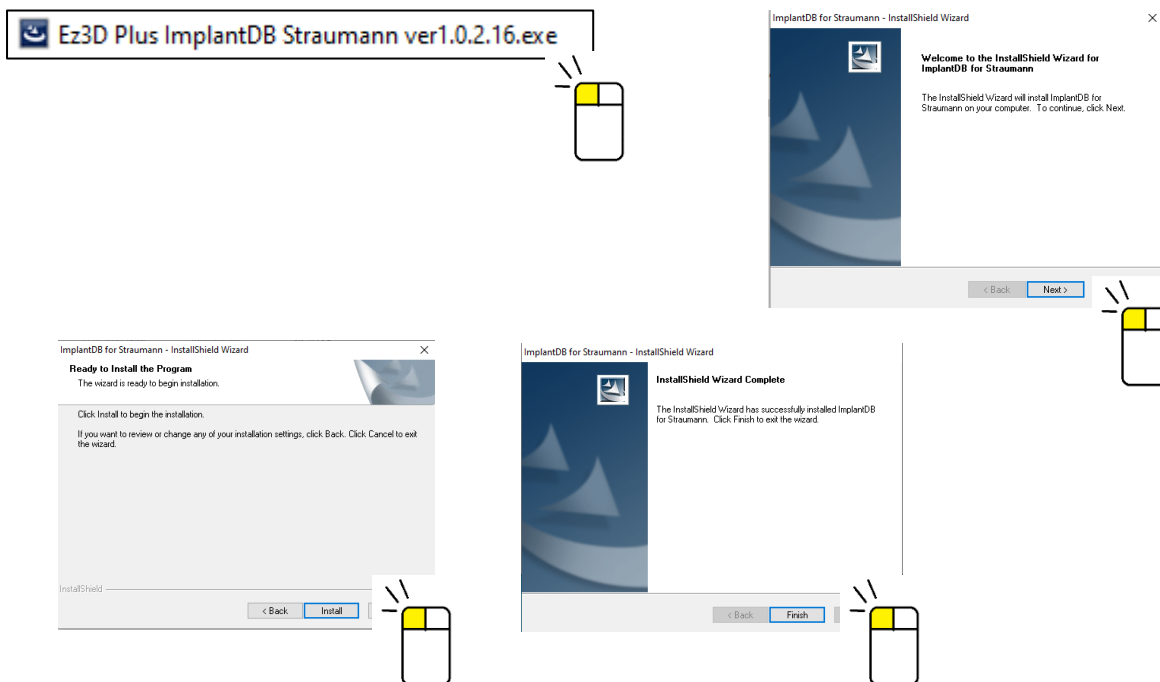
LM Lizenz Manager: Installation des Lizenz Manager zur Verwaltung der Ez3D-Pro Floating Softwarelizenzen im Netzwerk.



## 6 Installation Implantat Datenbank

### 6.1 Hersteller bezogene Installation

Herstellerbezogene Installation der Implantat Systeme zur Planung in Ez3D-Plus.



## 6.2 Installation mehrerer Implantat Systeme

Installation mehrerer Implantat Systeme nach Auswahl.

*Auswahl "Custom"*

*Auswahl der Hersteller*

## 7 Deinstallation von Implantat Systemen

*Auswahl des Herstellers*